



SGG TIMELESS®

*Less time in cleaning,
Timeless in brilliance*

SAINT-GOBAIN GLASS SIMPLICITY

The future of habitat. Since 1665.

SGG TIMELESS

Lasting transparency and easier to clean



■ **High degree of transparency and neutral appearance**

SGG TIMELESS consists of a very clear glass, SGG PLANICLEAR, to which a virtually invisible coating is applied. SGG TIMELESS is therefore very transparent and does not alter colour perception, irrespective of the thickness of the glass.

■ **An anti-corrosion effect for a lasting transparency**

Day in, day out, the glass is protected against corrosion, so that it does not become whitish and maintains its attractive appearance.

■ **Easier to clean glass**

Water slips over the surface of the glass, which limits limescale deposits and marks. Any residual marks clean off more easily than on non-treated glass.

■ **High-durability treatment**

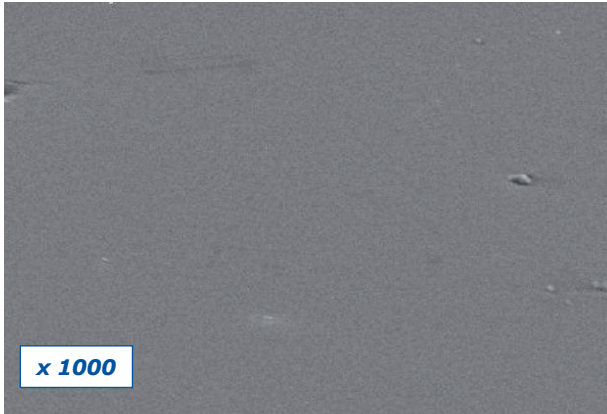
SGG TIMELESS is obtained by magnetron deposition of a coating of metal oxides. This treatment lasts over time without losing its effectiveness, and can withstand all types of industrial processing.



ANTI-CORROSION: TRANSPARENCY GUARANTEED

SGG TIMELESS

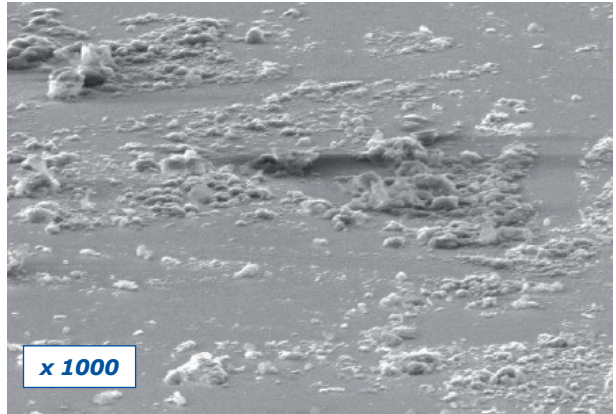
The surface of SGG TIMELESS is permanently protected by an innovative coating of metal oxides applied in the factory. The glass does not whiten, it remains transparent. Limescale and dirt do not adhere on the glass which is easier to clean than non-treated glass.



Magnified image of SGG TIMELESS shower glass that has been in daily use: no rough patches visible

Non-treated glass

Despite regular cleaning, glass in showers loses its shine over time. Small, whitish rough patches appear on the surface of the glass, which attract limescale and dirt.



Magnified image of ordinary shower glass that has been in daily use: visible rough patches

Application

SGG TIMELESS is designed for applications in showers. It can be used in shower screens, shower cubicles or bath screens.

Range

SGG TIMELESS is available on clear glass in 4, 6, 8 and 10 mm thicknesses.

Tolerance on thicknesses:

±0.2 in 4 and 6 mm,
±0.3 in 8 and 10 mm

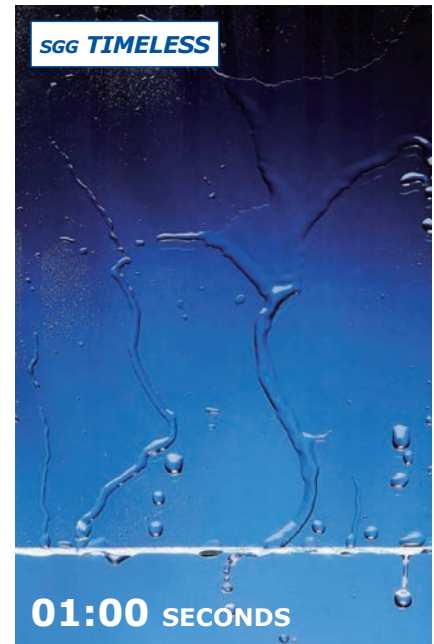
Standard dimensions:

3210 x 6000 mm (other dimensions: please contact SAINT-GOBAIN GLASS)



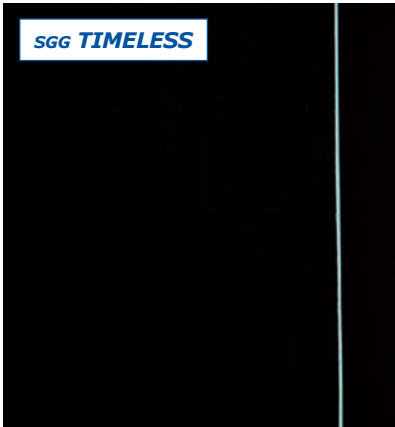
**WATER
DOWN THE GLASS**

When showering, the water can run down the glass quickly.

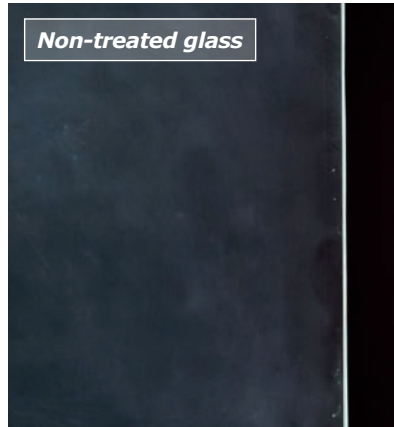


COMPARATIVE ANTI-CORROSION TEST

SGG TIMELESS resists corrosion. Shower after shower, it remains transparent.



▶ No corrosion, the glass remains transparent.

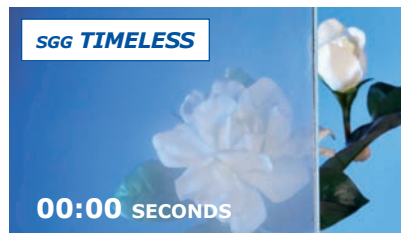


▶ High degree of corrosion, white haze on the glass.

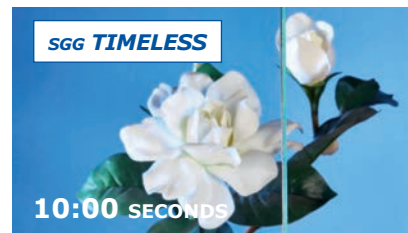
Accelerated ageing test: Exposure in hot (temperature: 50°C) and damp (humidity: 95%) environment for 14 days

COMPARATIVE ANTI-STEAM TEST

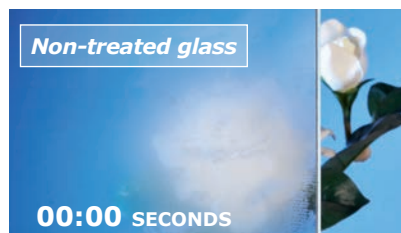
SGG TIMELESS recovers its initial transparency very quickly. Condensation evaporates faster than on non-treated glass.



▶ Reduced condensation on the glass.



▶ Condensation evaporates quickly.



▶ High levels of condensation.



▶ Condensation evaporates slowly.

INNOVATION

WATER RUNS CLEANER IMMEDIATELY

can be seen running down



COMPARATIVE LIMESCALE DEPOSIT TEST

Water runs down **SGG TIMELESS** quickly, leaving very few limescale marks, unlike most existing treatments.



► Few limescale marks.



► Numerous limescale marks.

Accelerated limescale deposit test: Glass sprayed with hot water for 30 seconds every 2 hours for 14 days

COMPARATIVE CLEANING TEST

With **SGG TIMELESS** cleaning is quick and easy. After showering, the squeegee glides over the glass. Dry cleaning is made easier.



► Easier to clean.



► Harder to clean.

Limescale and soap are easier to clean off

Factory processing

SGG TIMELESS is a glass treated on one face. It is a "to be tempered" product: tempering is mandatory in order to obtain its final properties.

The SGG TIMELESS coating is virtually invisible. To identify the treated face of the glass, it is recommended to identify the tin side of the glass (using a detector or UV lamp). SGG TIMELESS treatment is always deposited on the face opposite the tin side (on the atmosphere face). So as to identify the two sides of the glass, it is advisable to apply a semi-adhesive sticker on the tin side of the glass (non-treated face).

The product can withstand the main types of glass processing under the conditions generally used for float glass.

SGG TIMELESS can be cut, edgeworked and toughened.

It can also be curved with radii up to 1 metre (tests must be carried out for smaller radii).

SGG TIMELESS can be screen-printed on either face.

It can be laminated, provided that the glass has been toughened first and that the coating is on the exterior.

For every processing stage, it is advisable to use clean tools and materials so as to avoid scratching the coating. The glass must be dried carefully during each processing stage to avoid possible residual marks that may become permanent after toughening.

(For more information, please consult SGG TIMELESS Processing Guidelines)



Regulations

SGG TIMELESS complies with the following standards:

- EN 14428 : Shower enclosures - Functional requirements and test methods.
- EN 1096 (class A) : Glass in building - Coated glass.

Optical properties

The SGG TIMELESS coating is not tinted or reflective: its appearance is similar to that of clear glass.

SGG TIMELESS		
Thickness	Light transmittance	Light reflectance (Glass Side / Coating Side)
4mm	89%	10%
6 mm	89%	10%
8 mm	89%	10%
10 mm	88%	10%

* Measured values according to standard EN410

Manufacturing principle

SGG TIMELESS is obtained by magnetron deposition of a highly resistant coating of metal oxides using a precise industrial process.

Installation

The glass has to be installed with the SGG TIMELESS coating inside the shower enclosure. SGG TIMELESS can be installed in the same way as any other shower glass of the same thickness. In all cases, the installation must comply with current safety standards and regulations.

(For more information, please consult SGG TIMELESS Usage instructions).

Maintenance

SGG TIMELESS must be cleaned regularly. It can be cleaned with a soft cloth and water or with a squeegee. Cleaning products usually used for cleaning shower glass are authorized. Do not use cleaning products containing abrasive particles nor abrasive tools.

(For more information, please consult SGG TIMELESS Usage instructions).

Warranty

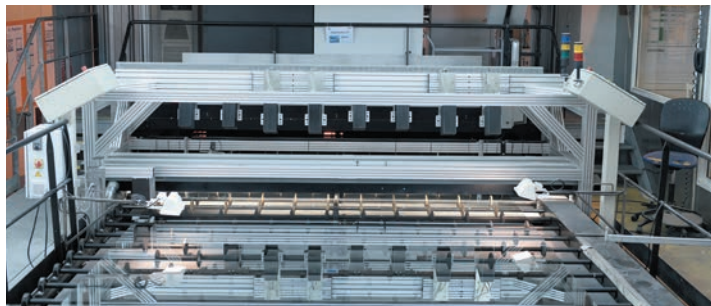
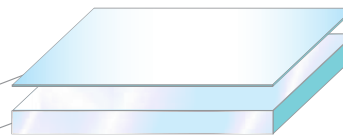


The shower glass SGG TIMELESS is warranted Anti-Corrosion to the Initial Purchaser for a period of 10 years. This applies after delivery under normal conditions of use and is subject to the processing, handling, maintenance guidelines and recommendations for use of Saint-Gobain Glass.

Anti-Corrosion means that SGG TIMELESS glass, used in such conditions, will not present an homogeneous whitish surface measured by an average Haze** across the coated side over 5%.

Magnetron coating

Glass SGG PLANICLEAR



Magnetron line



This warranty does not apply:

- if the glass is altered, damaged by accident, improperly used or by other causes external to the glass, or if used improperly;
- if the glass has not been specified, transported, stored, handled, installed, assembled, cleaned, used or maintained in accordance with the instructions given on the documentation and at www.saint-gobain-glass.com;
- after expiry of the warranty period for the initial glass.

WARRANTY LIMITATIONS:

This warranty covers only the replacement of SGG TIMELESS glass or refund of the difference between the initial selling price and the selling price of a non-coated glass, at Saint-Gobain Glass's decision.

In case of replacement, the replacement glass will be delivered to the delivery address of the Initial Purchaser.

This warranty does not cover scratches, breakage, cracks, or any incidental or consequential damages, nor the costs for removal and refitting of the glass.

It is non-transferable and non-assignable.

This warranty does not preclude the legal warranties.

* Initial Purchaser : Saint-Gobain Glass customer

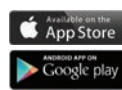
** haze is defined by the ratio of diffuse transmitted light to total transmitted light (diffuse + specular) according to ASTM D1003 - 11e1



Saint-Gobain Glass UK Ltd
Weeland Road, Eggborough
East Riding of Yorkshire, DN14 0FD, UK

www.saint-gobain-glass.com/uk

Download our range of apps



SGG064/11/2014