



# Interior Glass Systems



We make access in  
life smart and secure.

**dormakaba** 

# Interior Glass Systems



DRS headers with RTS88  
overhead concealed closers

DRS tapered rails

Dri-Fit® glazing system

TG 9387 pulls

## Contents

- 04 **Interior Glass Wall Systems**
- 06 **Manual Sliding Door Systems**
- 08 **Moveable Glass Wall Systems**
- 10 **Glass Fittings for Interior Swing Doors**
- 12 **Architectural Pulls, Handles, and Locksets**
- 14 **Concealed Closers, Pivots, and Glass Panic Hardware**

dormakaba interior glass systems bring the benefits of glass to your projects. Glass offers a healthy option for flexible space, transparency, versatility, efficiency, and a low cost of ownership. Whether you're selecting manual sliding doors for a welcoming office environment, framed or frameless glass walls for healthy space division, or moveable glass walls that allow for flexible space, dormakaba offers a clear advantage to your building.



Horizontal Sliding Wall System

Smart design is healthy. You can trust dormakaba glass systems for contemporary design solutions that give clarity to space design.



# Interior Glass Wall Systems



dormakaba's UNIQUIN demountable glass wall system provides a safe and flexible interior architecture solution with high STC rating.

## UNIQUIN

A multifunctional wall system for room configuration and access application that appeals on both the visual and structural levels. It offers the possibility to individually design and separate interior space with glass – for higher transparency and advanced well-being.



## PURE ENCLOSE®

PURE ENCLOSE Framed Glass Wall Systems with swing doors provide the aesthetic advantages of glass walls with the added benefit of full framing. The metal channels at the floor, ceiling, and walls effectively dampen sound transmission and add structural definition, without impeding sightlines. Full framing also accommodates uneven floors, which often present a challenge when installing glass walls.



## DORMA PURE®

Frameless PURE Glass Walls with sliding doors create simple, elegant fronts with extended transparent sightlines. They work well wherever space is limited. A precision top track and a small guide at the sill allow for a smooth transition between office and corridor.



## FUSION®

The FUSION Glass Wall design realizes an innovative mixed media concept: cool transparent glass walls merged with warm wood doors. Intriguing options become possible for both modern and traditional décors. Despite the sophisticated combination of elements, the design remains clean and simple.



© Robert Benson Photography



# Manual Sliding Door Systems



MUTO's streamlined header conceals a spectrum of operative features that enhance usability.

MUTO is particularly suitable for glass applications, but can be adapted for wood, metal, or other door material solutions. Depending on the type of MUTO unit, our SoftClose (DORMOTION) feature provides a cushioning effect either at closing only or at both closing and opening. This cushioning effect brings the sliding door to a soft end-point.

## Unparalleled Design in Multiple Finishes

Choose an aluminum or similar-to-satin-stainless finish, or choose from over 200 RAL colors. MUTO can handle door panels ranging from 176 lb (80 kg) or less to as much as 330 lb (150 kg) and is available in single- or bi-parting models, with or without ORMOTION, recessed, synchro, self-closing, glass mount and telescopic.

MUTO is available with optional features that improve the operation of the system. The E-Lock is designed to work with MUTO Premium XL Manual Sliding Door Systems and is used to add security and privacy to interior spaces.



## DRS 120/RS 120

DRS 120 and RS 120 feature an aluminum track that is light, yet rugged, and resistant to twisting. It can be fixed directly to the ceiling or wall. The convex rail surface prevents dust and dirt from collecting. The RS 120 aluminum covers are easily clipped onto the track. If the track is ceiling mounted, covers are used on both sides. If the track is wall mounted, a cover is used on the exposed side. The RS 120 Synchro features a cable and deflection device for synchronously opening a bi-parting panel installation. Opening one panel automatically opens the other—minimal effort is required for maximum opening width.



## MANET

MANET uses single point stainless steel fittings to showcase the beauty of tempered glass construction. Work environments today require open space and light. Designers and architects alike prefer the flexibility that glass partitions and doors provide. The MANET system offers designers limitless possibilities for creative glass ideas. MANET systems can be designed with either a pivoting or sliding door, simulating open space while still maintaining privacy. Additionally, MANET can accommodate sidelites and transoms as well as curved sliding doors. The flush-mount fittings offer a unique and streamlined smooth surface.





# Moveable Glass Wall Systems



HSW system with custom tracking and latching mechanism

## HSW/FSW Horizontal Sliding & Folding Glass Walls

Horizontal Sliding Wall Systems (HSW) and Folding Sliding Wall Systems (FSW) offer space flexibility and are an ideal solution for any application where total vision is required. Glass walls transcend the limitations of fixed solid walls, multiply your options for designing space, and let daylight shine through to interior spaces. The purpose may be to link, separate, add security, provide noise or thermal insulation, or remove barriers. HSW/FSW sliding walls are available in a range of customizable systems to meet your design requirements.

The track can be arranged in a variety of configurations, and sliding panels can be moved without using floor guides or channels. Bolts and locks secure each sliding panel in position and the panels are easy to adjust, align, and operate.

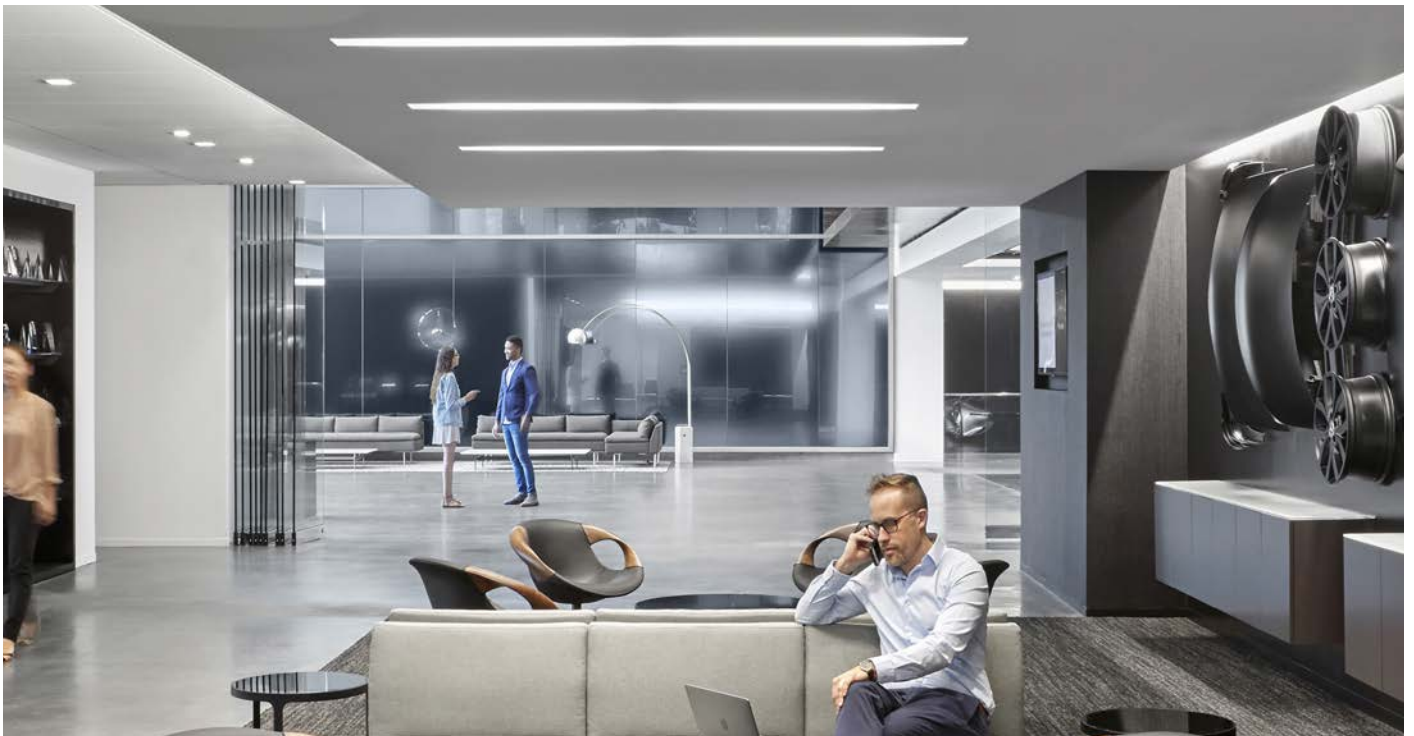
"DORMA took the bull by the horns to help bring our design intent into reality. HKS Architects wanted to provide premium suite patrons with a glazing system that looked fantastic both open and closed, and allowed them to flow freely between suite and patio areas. The aesthetics and features of HSW systems had great benefits. Not having vertical mullions made the system appear to go away even when closed, as if there were no glazing system in place at all! The tracking and latching system developed specifically for this venue is easy to operate and gives the patron the feeling of being right in the action."

Kevin A. Taylor, Senior Vice President, HKS, Inc.

AIA Project Architect for the Dallas Cowboys AT&T Stadium



A choice of models and a wealth of finishing options allow you to specify an HSW glass wall system that meets your requirements precisely.



# Glass Fittings for Interior Swing Doors



## DRS/Headers/Dri-Fit®

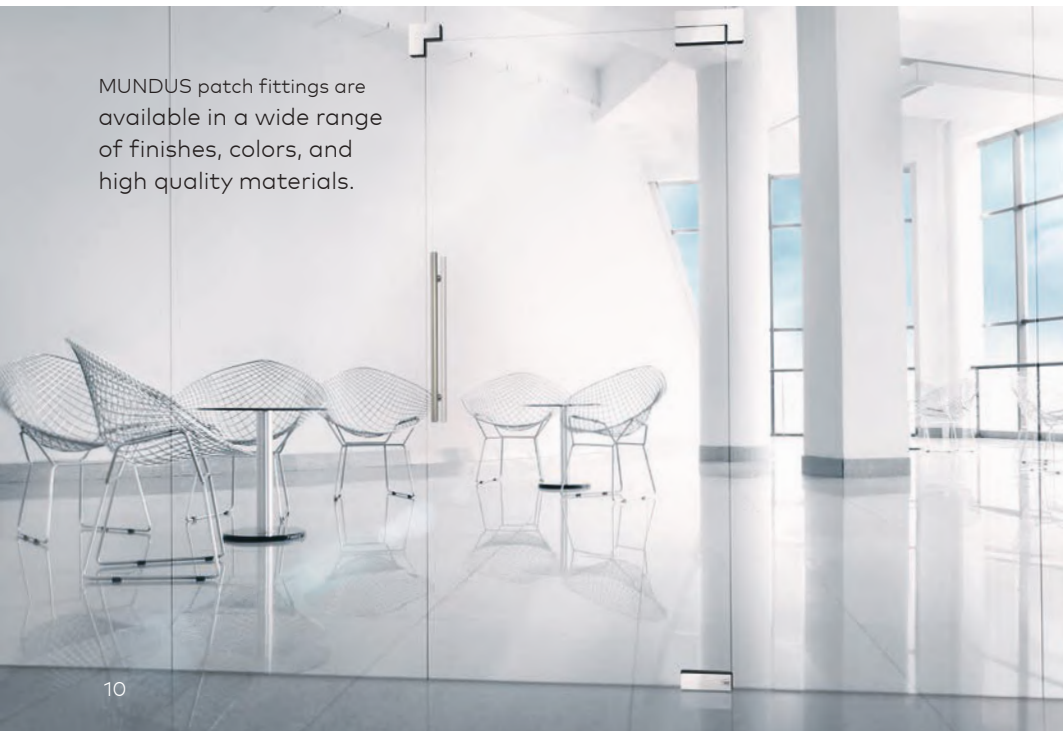
Innovative design, quality materials, and the finest workmanship allow DRS rail and header systems to meet the most demanding conditions. DRS rails have been independent-laboratory-tested for holding force addressing almost any climate conditions. Rails are available in five heights and in square and tapered profiles to meet the aesthetic needs of the building design. Multiple glazing channel options for fixed tempered glass are also available.

DRS rail heights are 2-1/2" (64), 3-5/8" (92), 4" (102), 6" (152) and 10" (254).<sup>1</sup> dormakaba headers are offered in three widths: 4-1/8" (105), 4-1/2" (114), and 6" (152). Rails and headers can be installed on tempered monolithic or tempered laminated glass from 3/8" (10) to 13/16" (21) thick.

<sup>1</sup> 2-1/2", 3-5/8", and 4" tapered rails and 10" (254) square rails are ADA compliant.



MUNDUS patch fittings are available in a wide range of finishes, colors, and high quality materials.



## MUNDUS

MUNDUS patch fittings offer a unique and inspiring design that supports glass thicknesses up to 7/8" (22), tempered laminates, and glass doors weighing up to 440 lb (200 kg). Combined with simple, fast installation, they are striking in appearance and suitable for a range of glass thicknesses without changing gaskets. Visually and technically advanced, MUNDUS supports most common patch fitting systems and integrates with tempered glass constructions of nearly any conceivable design.



# Patch Fittings

Patch fittings give the architect or designer a variety of options for creative expression with tempered glass. Our comprehensive line of fittings is manufactured of high quality materials and available in contemporary architectural finishes. All fittings are based on a modular system for effortless glass preparation to provide technically sound and visually attractive tempered glass structures. Peerless workmanship and attention to detail ensure long service life and excellent performance.

### Universal

With its broad range of options and configurations, Universal patch fittings are ideal for almost any design. Tempered glass assemblies are provided with fixed parts in a variety of arrangements—with corner fittings or fin fittings for double- or single-acting doors in single- or double-door designs. Universal fittings are supplied standard with gaskets to suit 3/8" (10) and 1/2" (12) glass.



Universal patch fittings



EA offset fittings

### EA Offset Fittings

EA offset patch fittings are characterized by their slim, neat shape and skillful hinge design. The comprehensive EA range allows the transparent elegance of single-acting doors to reach their full potential—whether hung in frames or integrated into tempered glass assemblies. EA patch fittings are available for 3/8" (10) and 1/2" (12) glass.

### Floating Header

For use on all glass doors with glass transom, the dormakaba floating header allows for installation with overhead closers. The floating header connects to the adjoining sidelite glass—providing a platform for installing overhead closers, door stops, or walking beam pivots.



Floating Header



TENSOR double-acting hinge

### TENSOR

The TENSOR double-acting hinge is suitable for many diverse applications, including conversions and renovations utilizing tempered glass.

### BEYOND

The unique BEYOND swing door system for glass doors is safe, functional, and attractive. Characterized by its clear styling lines, BEYOND enables you to build frameless swing glass doors into tempered glass assemblies and wall openings.



BEYOND swing door system

**Note:** Measurements are shown as inches (mm); for example, 3/8" (10).

# Architectural Pulls, Handles, and Locksets



Architectural pulls, handles, and locksets send a visual invitation that only a glass opening can express.

## TG 138 Locking/Non-Locking Ladder Pulls

For elegant and secure glass entrances, the TG 138 locking ladder pull offers a pair of tubular lockable pull handles with ADA thumb turns. Perfect for the toughest interior or exterior environments, TG 138 pulls are made from the highest quality Grade 316L stainless steel. Four standard lengths — 49" (1245), 60" (1524), 72" (1829), 84" (2134) — are available, as well as custom lengths upon request. Matching TG 138 non-locking pulls are also available.

## TG 9 Series Handles

The TG 9 Series handles come in a variety of designs and sizes and offer both custom and stock solutions. Many TG 9 handles are made to order, to schedule, and to specification—eliminating the need to adapt on site.

## ARCOS Handles

With its arc-like curvature to complement the ARCOS line of fittings and lock housings, ARCOS handles are available in two lengths and two finishes: 13-3/4" (350) or 29-1/2" (750) in either clear anodized or custom painted. These beautifully crafted, high-quality back-to-back handles combine a long service life with attractive appearance.

## BEYOND

Attractive yet simple, BEYOND pull handles are made of aluminum and have the appearance of satin stainless steel.

**Note:** Measurements are shown as inches (mm); for example, 3/8" (10).

TG 138 locking ladder pulls



TG 9387 handles



ARCOS handles



**Manet**

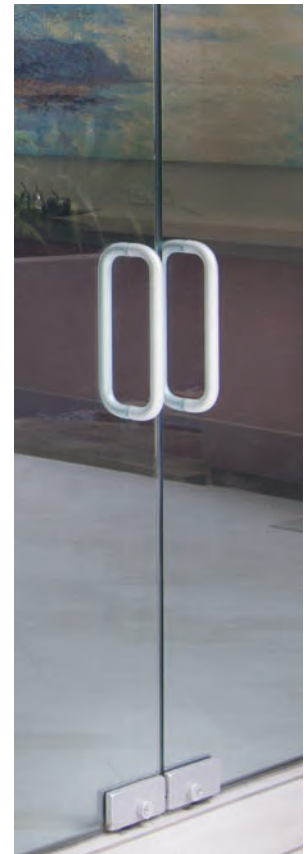
Elegant, technologically advanced MANET handles deliver ideal solutions for a range of internal applications. These satin stainless steel handles are available in four fixed lengths and in single-sided or back-to-back versions. They can be installed horizontally, vertically, or in a handrail configuration.

**Economy Series**

Our economy series handle is high quality and cost effective. Available in both 10" (254) and 12" (305), as either single-sided or back-to-back options. The economy series is particularly suited for jobs requiring volume.



MANET handles



Economy series handles

**Glass Locksets and Housings**

Our locks, levers, and accessories will meet all of your technical, aesthetic, and budget requirements—no matter where you install internal glass doors and regardless of the doors' design, size, or type.

**Studio**

Simple uncluttered lines enhance the inherent beauty and character of tempered glass. Our Studio line includes Classic and Rondo styles. Both provide a slim shape that fits perfectly into the surroundings and enhances the appearance of interior glass doors.

**Junior**

For challenging specifications and reliability in busy environments, Junior Office and Junior Office Classic provide a timeless look engineered for heavy use and a range of demanding requirements.

**ARCOS**

ARCOS Studio is the epitome of elegance to underline the value of transparency in interior architecture while the ARCOS Office offers heavy-duty elegance to withstand constant use and still combine proven functionality with aesthetics.

**CLM9000**

CLM9000 is a sleekly designed lockset measuring only 5" x 9" (127 x 228) with a built-in heavy-duty ANSI/BHMA certified Grade 1 mortise lockset that's extremely reliable, with high strength springs and a positive stop.



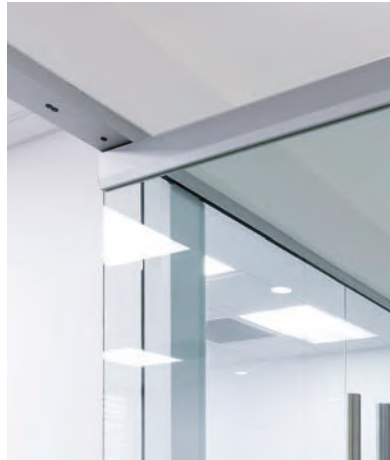
# Concealed Closers, Pivots, and Glass Panic Hardware



BTS80 floor-concealed door closer  
GP1000 glass panic hardware



BTS80 closer



RTS88 overhead concealed door closer

## BTS80/BTS75V

BTS80 and BTS75V floor-concealed door closers offer adaptability to almost any installation. Its compact closer body can be used where a larger closer would be prohibitive. Versatility allows installation in thin slab concrete subfloor construction. A wide selection of interchangeable spindles makes the BTS series suitable for virtually any floor covering or threshold application.

## RTS88

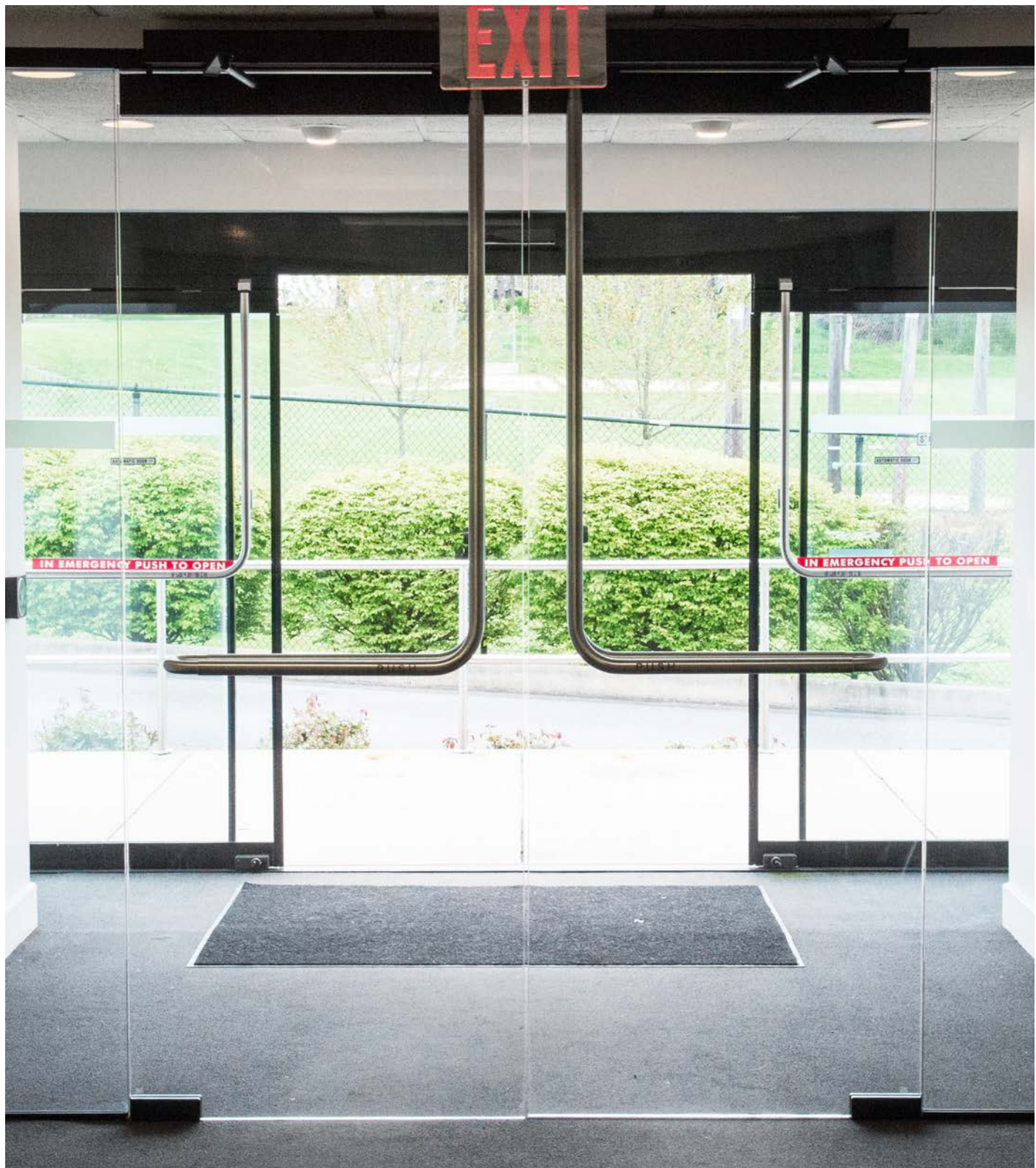
The RTS88 overhead concealed door closer is designed to give lasting, dependable service where surface applied units and other types of closers are not suitable, or would interfere with the architectural design. It can be easily installed in wood, aluminum, or hollow metal doors and frames, for single- or double-acting doors.



## GP1000/GP1100 Glass Panic Hardware

Accommodating a wide range of door sizes and applications, dormakaba's glass panic series offers field adjustability offering a quick and simple installation. An innovative design, backed by 4 patents, will ease installation and glass sizing issues. GP Series devices support lower glass fabrication costs by leveraging a single fabrication hole for panic actuation, reduce installation labor costs, as well as eliminate costs incurred with glass replacement due to miss-sizing.







[www.dormakaba.us](http://www.dormakaba.us)

dormakaba USA, Inc.  
Dorma Drive,  
Drawer AC  
Reamstown, PA 17567  
800.523.8483